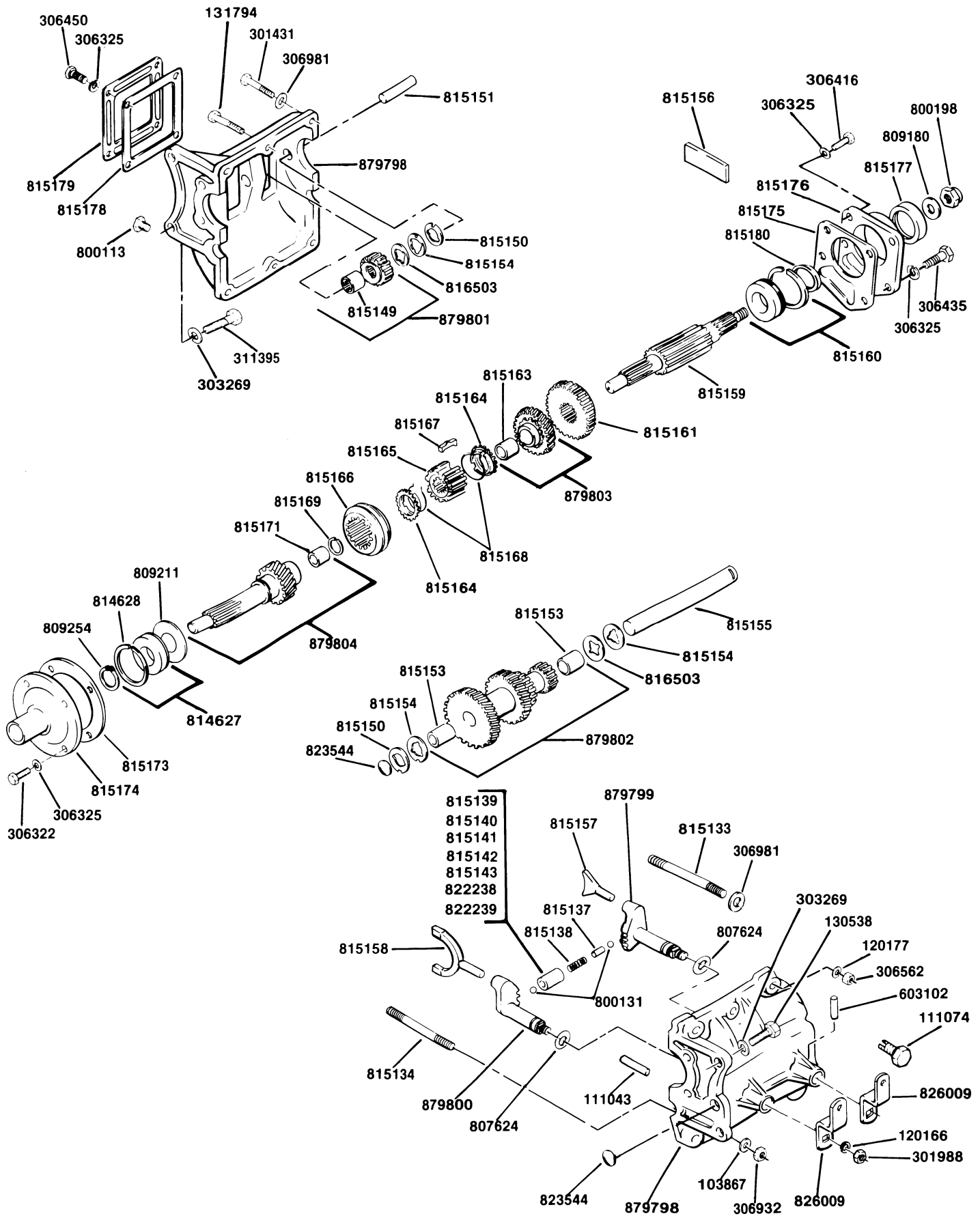


# TRANSMISSION ASSEMBLY



### TRANSMISSION ASSEMBLY

Part No.	Description	No. Req'd.	Part No.	Description	No. Req'd.
120166	Lockwasher, 1/2	2	815159	. Shaft, main	1
130538	Screw, 7/16-14 x 1 1/4	2	815160	. Bearing, ball	1
301988	Nut, 1/2-20	2	815161	. Gear, low & reverse	1
303269	Lockwasher, 7/16	4	815164	. Ring, synchronizer blocking	2
311395	Screw, 7/16-14 x 1 3/4	2	815165	. Hub, sec. & high clutch	1
800198	Nut, lock, 1/2-20	1	815166	. Sleeve, sec. & high clutch	1
809180	Washer, 1/2	1	815167	. Plate, shifting	3
815180	Spacer	1	815168	. Spring	2
826009	Lever, control	2	815169	. Ring, retaining	1
880572	Transmission ass'y	1	815173	. Gasket, front bearing	1
111074	. Plug, magnetic drain	1	815174	. Retainer, front bearing	1
120177	. Lockwasher, 3/8	7	815175	. Gasket, rear bearing	1
301431	. Screw, 3/8-16 x 2-1/2	1	815176	. Retainer, rear bearing	1
306322	. Screw, 5/16-18 x 7/8"	4	815177	. Seal, oil	1
306325	. Lockwasher, 5/16	13	815178	. Gasket, P.T.O.	1
306416	. Screw, 5/16-18 x 1"	1	815179	. Plate, P.T.O.	1
306435	. Screw, 5/16-18 x 1-1/4"	3	816503	. Washer, thrust (.048)	As Req'd.
306450	. Screw, 5/16-18 x 3/4"	4			
603102	. Pin, spiral, 1/8 x 1-1/4"	2	822238	. Sleeve, interlock (1.263")	1
800113	. Plug, filler	1	822239	. Sleeve, interlock (1.267")	1
800131	. Ball, 5/16 steel	2	823544	. Plug, expansion	2
*800292	. Nut, 3/8-16, lock	1	879798	. Case ass'y, transmission	1
807624	. O-ring	2	103867	. Washer, 5/16	1
809211	. Slinger, oil	1	111043	. Pin, taper	2
809254	. Ring, retaining	1	131794	. Screw, 3/8-16 x 2"	6
814627	. Bearing, ball	1	306562	. Nut, 3/8-16	7
814628	. Ring, retaining	1	306932	. Nut, 5/16-18	1
815137	. Pin	1	306981	. Washer, 3/8	7
815138	. Spring	1	815133	. Stud	1
815139	. Sleeve, interlock (1.259")	1	815134	. Stud	1
815140	. Sleeve, interlock (1.255" a)	1	879799	. Lever ass'y, low & rev. shift	1
815141	. Sleeve, interlock (1.251" b)	1	879800	. Lever ass'y, sec. & high shift	1
815142	. Sleeve, interlock (1.247" c)	1	879801	. Gear ass'y, reverse idler	1
815143	. Sleeve, interlock (1.243" d)	1	815149	. Bearing, needle	1
815150	. Washer, thrust (.024)	2	879802	. Gear ass'y, cluster	1
815151	. Shaft, reverse idler	1	815153	. Bushing	2
815154	. Washer, thrust (.036)	3	879803	. Gear ass'y, second	1
815155	. Jackshaft	1	815163	. Bushing	1
815156	. Plate, locking	1	879804	. Gear ass'y, main drive	1
815157	. Fork, low & rev. shifter	1	815171	. Bearing, needle	1
815158	. Fork, sec. & high shifter	1			

\* Not illustrated.

INDENTED PART NAMES INDICATE THESE PARTS ARE INCLUDED IN PRECEDING ASSEMBLY.